



**INTERSTATE-McBEE**



**New  
Replacement Parts for  
NAVISTAR®/  
INTERNATIONAL ENGINE®  
DT360 / DT408 / DT466 / I530  
ENGINES**



**Diesel & Industrial  
engine spares**

Brisbane

Melbourne

Perth

**Komatsu ▶ Cummins ▶ Detroit ▶ Caterpillar**

Brisbane Phone: 07 3879 4255

Melbourne Phone: 03 9761 4431

Perth Phone: 08 9303 9122

Email: [sales@dai.com.au](mailto:sales@dai.com.au)

Email: [sales.melb@dai.com.au](mailto:sales.melb@dai.com.au)

Email: [perth.sales@dai.com.au](mailto:perth.sales@dai.com.au)

[www.dai.com.au](http://www.dai.com.au)



# INTERSTATE-McBEE



## INDEX

Engine Identification .....	3
Engine Kit Quick Reference.....	4-5
DT360 / DTA360 .....	6-7
DT466 A/B/C to 1993 .....	8-11
DT408 / DT466P / I530P PLN ....	12-14
DT466E / I530 Electronic .....	15-18
DT466E / DT570 / HT570 .....	19-20
HEUI® Injectors.....	21-23
Warranty Policy .....	24-25

### INTERSTATE-McBEE, LLC

5300 Lakeside Avenue • Cleveland, Ohio 44114-3996 U.S.A.  
216-881-0015 • Toll Free: 1-800-321-4234 • Fax: 216-881-0805  
[www.interstate-mcbee.com](http://www.interstate-mcbee.com) • E-mail: [sales@interstate-mcbee.com](mailto:sales@interstate-mcbee.com)

# BASIC ENGINE IDENTIFICATION

Example 468GM2U569749

468	G	M2	U	569749
Engine Model	Configuration	Application	Origin	Unit #
360 = A model 361 = B model 362 = C model	B = Turbo JWAC  D = Natural Aspirated	A2 = Service  M2 = Truck	U = USA	
408	G = Turbo Air to Air			
466 = A model 467 = B model 468 = C model	H = HEUI  T = Turbo			
469 = 1st new generation				
470 = 2nd new generation				
466H = MY2004				
530 = A model 531 = B model				

All of the above models are inline six cylinder diesel engines built on a common platform. The different displacements produced are achieved by bore and stroke variation.

## ESN location:

The complete engine serial number (ESN) is stamped on a pad on the side of the cylinder block. For units built prior to model year 2000 the location was on the left hand side of the block just below the cylinder head to cylinder block parting line. For model year 2000 and newer units the serial location was moved to the right side of the cylinder block between the oil cooler and top of the block.

## Emission Label:

The emission label is located on top of the rocker cover or intake manifold. The engine model, model year, horsepower rating and torque rating can be obtained from this label.

**This information is required to determine the correct components for most units built post 1993.**

# ENGINE KIT QUICK REFERENCE

## IN-FRAME KIT MATRIX

ESN PREFIX	MODEL	UNIT #	YEAR	HP RATING	TORQUE	IN-FRAME KIT
360/361/362	DT 360	39375 & above	1988 - 1991	ALL	ALL	M-1817253C96
408	DT408	850654 & above	1993-1994	ALL	ALL	M-1826322C95
466/467/468	DT466	439618 & below	1978-1984	ALL	ALL	MCIF466-4-E
	DT466	439619 & above	1984-1993	ALL	ALL	MCIF466-4-L
466/467/468	DT466	439618 & below	1978-1984	ALL	ALL	MCIF7520E
	DT466	439619 & above	1984-1993	ALL	ALL	MCIF7520L
469G	DT466P	850654 to 888340	1993-1994	ALL	ALL	M-1830063
469G	DT466P	888341 & above	1995-1997	175ST	430 @ 1700	M-1824824C97
				190ST	485 @ 1700	
				195HT	520 @ 1500	
				210ST	605 @ 1700	
				210HT	605 @ 1500	
				230ST	605 @ 1700	
469G	DT466P	888341 & above	1995-1997	230HT	660 @ 1500	M-1824821
				250HT	660 @ 1500	
469H	DT466E	980820 to 1194038	1995-1999	175ST	430 @ 1500	M-1841391C91
				190ST	485 @ 1500	
				195HT	520 @ 1450	
				210ST	520 @ 1500	
469H	DT466E	980820 to 1126948	1995-1998	210HT	605 @ 1450	M-1833446
				230ST	605 @ 1500	
				230HT	660 @ 1450	
				250HT	660 @ 1450	
469H	DT466E	1126949 to 1194038	1999	230HT	660 @ 1450	M-1830566C96
				250HT	660 @ 1450	
470	DT466E	1194039 to MY2004	2000-2003	175ST	460 @ 1400	M-1836195C96 M-1888653C93
				195ST	520 @ 1400	
				195HT	560 @ 1400	
				215ST	540 @ 1400	
				215ST	560 @ 1400	
				215HT	620 @ 1400	
470	DT466E	1194039 to MY2004	2000-2003	230ST	620 @ 1400	M-1836300C94 M-1889992C92
				230HT	660 @ 1400	
				250ST	660 @ 1400	
				250HT	800 @ 1400	

ST = standard torque HT = high torque (See emission label)

# ENGINE KIT QUICK REFERENCE

## IN-FRAME KIT MATRIX

ESN PREFIX	MODEL	UNIT #	YEAR	HP RATING	TORQUE	IN-FRAME KIT
466H	DT466E	2000000 to MY2005	2004	210ST	520 @ 1400	M-1879703C94
				220ST	540 @ 1400	
				225ST	560 @ 1400	
				225HT	620 @ 1400	
466H	DT466E	2000000 to MY2005	2004	245ST	620 @ 1400	M-1879705C93
				245HT	660 @ 1400	
				255ST	660 @ 1400	
				260HT	800 @ 1400	
				285HT	800 @ 1400	
				300HT	860 @ 1400	
466H	DT466E	approx.2046901 to MY2007	2005-2006	175ST	460 @ 1400	M-1880991C94
				195ST	520 @ 1400	
				195HT	560 @ 1400	
				215ST	540 @ 1400	
				215ST	560 @ 1400	
				215HT	620 @ 1400	
466H	DT466E	approx.2046901 to MY2007	2005-2006	175ST	460 @ 1400	M-1885597C92
				195ST	520 @ 1400	
				195HT	560 @ 1400	
				215ST	540 @ 1400	
				215ST	560 @ 1400	
				215HT	620 @ 1400	
530G	530PLN		1993-1997	Below 300	All	M-1833447C95
530G	530PLN	915841 & above	1993-1997	300	All	M-1841285C93
530H	DT530E	1194038 & below	1995-1999	Below 300	All	M-1836012C95
530H	DT530E	1194038 & below	1995-1999	300 & above	All	M-1833445C96
531H	DT530E	1194039 to MY2004	2000-6/2004	275 & below	All	M-1830718C98
						M-1876205C91
531H	DT530E	1194039 to MY2004	2000-6/2004	300 & above	All	M-1841902C91
						M-1841897C94

ST = standard torque HT = high torque (See emission label)

# DT360 / DT360A

## IN-FRAME KIT

PART #	QTY	DESCRIPTION	NOTE
M-1817253C96	1	In-Frame Kit	ESN 39375 to 112786

## CYLINDER COMPONENTS

PART #	QTY	DESCRIPTION	NOTE
M-1817250C92	6	Cylinder Kit	% ESN 39375 to 112786
M-1817178C2	6	Piston	% ESN 39375 to 112786

M-1809935C4	6	Cylinder Liner	
M-1809935C4WS	6	Cylinder Liner Kit	With liner o-rings
M-1809938C91	6	Liner Packing Kit	O-rings for one liner
M-1817251C91	6	Ring Set	
M-1809914C1	6	Piston Pin	
M-326751R1	12	Pin Retainer	

## ENGINE BEARINGS

% Note: These must be used in full sets only

PART #	QTY	DESCRIPTION	NOTE
M-1823863C91	6	Connecting Rod Bearing STD	
M-1823864C91	6	Connecting Rod Bearing .010"	
M-1823865C91	6	Connecting Rod Bearing .020"	
M-1823866C91	6	Connecting Rod Bearing .030"	

M-1823859C91	1	Main Bearing Set STD	
M-1823860C91	1	Main Bearing Set .010"	
M-1823861C91	1	Main Bearing Set .020"	
M-1823862C91	1	Main Bearing Set .030"	

M-680117C1	1	Cam Bearing Set	
M-1810049C1	6	Connecting Rod Bushing	
M-327185R91	1	Idler Bearing	

## GASKET SETS

PART #	QTY	DESCRIPTION	NOTE
M-1817255C95	1	Upper Gasket Set	
M-1815668C93	1	Lower Gasket Set	
M-1813933C96	1	Front Cover Gasket Set	
M-1817256C98	1	Overhaul Gasket Set Complete	

# DT360 / DT360A

## CYLINDER HEAD COMPONENTS

PART #	QTY	DESCRIPTION	NOTE
M-676687C4	6	Intake Valve	
M-671602C1	6	Intake Seat .002" OSOD	
M-671604C1	6	Intake Seat .015" OSOD	
M-1810086C2	6	Exhaust Valve	
M-671599C1	6	Exhaust Seat .002" OSOD	
M-671601C1	6	Exhaust Seat .015" OSOD	
M-41339D	24	Valve Lock	
M-675439C1	12	Valve Guide	ESN ≤ 72706 (2.750"L)
M-1815264C1	12	Valve Guide	ESN ≥ 72707 (2.610"L)
M-682064C1	12	Valve Spring	
M-1811581C91	12	Rotator Assembly (with shield)	ESN ≤ 72706
M-1817661C91	12	Rotator Assembly	ESN ≥ 72707
M-681234C1	12	Rotator Shield	ESN ≤ 72706
M-1815374C1	12	Valve Stem Seal (top hat)	ESN ≥ 72707
M-675442C1	6	Injector Sleeve	
M-1802340C1	12	Valve Lifter - Solid (1.120" OD)	

## CRANKSHAFT SEALS

PART #	QTY	DESCRIPTION	NOTE
M-690437C93	1	Front Crankshaft Seal Kit	
M-1809964C92	1	Rear Crankshaft Seal Kit	

## THERMOSTAT

PART #	QTY	DESCRIPTION	NOTE
M-1801191C91	1	Thermostat Kit 180°	Includes seal & gasket

## WATER PUMP

PART #	QTY	DESCRIPTION	NOTE
M-685155C94	1	Water Pump Prior to 10/91	6 bolt fan drive
M-1815538C91	1	Water Pump 10/91 and later	Screw on fan drive

## GASKET LISTING

PART #	QTY	DESCRIPTION	NOTE
M-1810169C2	1	Exhaust Manifold Gasket	
M-1810510C3	1	Front Cover Gasket	
M-675812C2	1	Front End Plate Gasket	ESN ≤ 54458
M-1813962C1	1	Front End Plate Gasket	ESN ≥ 54459
M-675609C1	1	Injection Pump Gasket	
M-675477C1	6	Injector Nozzle Gasket	Stanadyne
M-682199C2	1	Intake Manifold Gasket	
M-675513C1	2	Oil Cooler Gasket	
M-671825C4	1	Oil Pan Gasket	
M-59658D	1	Oil Pan Drain Gasket	
M-1802867C1	1	Oil Pickup Tube Gasket	ESN ≥ 466776
M-675389C1	1	Rocker Cover Gasket	
M-677692C2	6	Rocker Cover Grommet	
M-670073C2	1	Turbocharger Mounting Gasket	
M-253660R2	1	Turbocharger Oil Supply Gasket	
M-670079C3	1	Turbocharger Oil Drain Gasket	



# DT466 A/B/C TO 1993

## IN-FRAME KITS

PART #	QTY	DESCRIPTION	NOTE
MCIF7520E	1	In-Frame Kit	ESN 75000 to 439618
MCIF7520L	1	In-Frame Kit	ESN 436619 to 1st New Generation

MCIF466-4-E	1	In-Frame Kit w/ 4-Ring Pistons	ESN 1 to 439618
MCIF466-4-L	1	In-Frame Kit w/ 4-Ring Pistons	ESN 436619 to 1st New Generation

## OVERHAUL KITS

PART #	QTY	DESCRIPTION	NOTE
MCOH7520E	1	Overhaul Kit	ESN 75000 to 439618
MCOH7520L	1	Overhaul Kit	ESN 439619 to 1st New Generation

MCOH466-4-E	1	Overhaul Kit w/ 4-Ring Pistons	ESN 1 to 439618
MCOH466-4-L	1	Overhaul Kit w/ 4-Ring Pistons	ESN 439619 to 1st New Generation

## CYLINDER COMPONENTS

PART #	QTY	DESCRIPTION	NOTE
M-CK466-4	6	Cylinder Kit w/ 4-Ring Piston %	ESN 1 to 1st New Generation
M-MCB466-4	6	4-Ring Piston %	
M-RS466-4	6	Ring Set for 4-Ring Piston	
M-670675C1	6	Piston Pin	
M-326874R1	12	Pin Retainer	
M-1810504C1	6	Cylinder Liner	
M-680086C1	6	Liner Packing Kit	O-rings for one liner

M-1817645	6	Cylinder Kit %	ESN 75000 to 439618
M-1817520C2	6	Piston %	
M-1817247C91	6	Ring Set	
M-670675C1	6	Piston Pin	
M-326874R1	12	Pin Retainer	
M-1810504C1	6	Cylinder Liner	
M-680086C1	6	Liner Packing Kit	O-rings for one liner

M-675774C2	18	Liner O-rings	
------------	----	---------------	--

% **Note:** These must be used in full sets only.



# DT466 A/B/C TO 1993

## ENGINE BEARINGS

PART #	QTY	DESCRIPTION	NOTE
M-681314C3	6	Connecting Rod Bearing STD	ESN ≤ 439618 (1.195"W)
M-681315C3	6	Connecting Rod Bearing .010"	
M-687382C3	6	Connecting Rod Bearing .020"	
M-681316C3	6	Connecting Rod Bearing .030"	
M-1808059C92	6	Connecting Rod Bearing STD	ESN ≥ 439619 (1.255"W)
M-1808060C92	6	Connecting Rod Bearing .010"	
M-1808061C92	6	Connecting Rod Bearing .020"	
M-1808062C92	6	Connecting Rod Bearing .030"	
M-684570C93	6	Main Bearing STD	ESN ≤ 439618 (1.220"W)
M-684579C93	1	Main Bearing STD	
M-684573C93	6	Main Bearing .010"	
M-684582C93	1	Main Bearing .010"	
M-687391C3	6	Main Bearing .020"	
M-687394C3	1	Main Bearing .020"	
M-684576C93	6	Main Bearing .030"	
M-684585C93	1	Main Bearing .030"	
M-1808069C92	6	Main Bearing STD	ESN ≥ 439619 (1.293"W)
M-684579C93	1	Main Bearing STD	
M-1808070C92	6	Main Bearing .010"	
M-684582C93	1	Main Bearing .010"	
M-1808071C92	6	Main Bearing .020"	
M-687394C3	1	Main Bearing .020"	
M-1808072C92	6	Main Bearing .030"	
M-684585C93	1	Main Bearing .030"	
M-680117C1	1	Cam Bearing Set	
M-675006C1	6	Connecting Rod Bushing	
M-327185R91	1	Idler Bearing	

## GASKET SETS

PART #	Qty	DESCRIPTION	NOTE
M-1817254C96	1	Upper Gasket Set	
M-674399C96	1	Lower Gasket Set	ESN ≤ 567491
M-1815668C93	1	Lower Gasket Set	ESN ≥ 567492
MCB674399	1	Lower Gasket Set (with crank seals)	ESN ≤ 567491
MCB1815668	1	Lower Gasket Set (with crank seals)	ESN ≥ 567492
M-680084	1	Front Cover Gasket Set	ESN ≤ 567491
M-1813933C96	1	Front Cover Gasket Set	ESN ≥ 567492

## DT466 A/B/C TO 1993

### CYLINDER HEAD COMPONENTS

PART #	QTY	DESCRIPTION	NOTE
M-675046C4	6	Intake Valve	
M-671559C1	6	Intake Seat .002" OSOD	
M-671561C1	6	Intake Seat .015" OSOD	
M-676865C4	6	Exhaust Valve	
M-671563C1	6	Exhaust Seat .002" OSOD	
M-671565C1	6	Exhaust Seat .015" OSOD	
M-41339D	24	Valve Lock	
M-675439C1	12	Valve Guide	ESN ≤ 594839 (2.750"L)
M-1815264C1	12	Valve Guide	ESN ≥ 594840 (2.610"L)
M-682064C1	12	Valve Spring	ESN ≤ 532980 (2.340"L)
M-677349C1	12	Valve Spring	ESN ≥ 532981 (2.292"L)
M-1811581C91	12	Rotator Assembly (with shield)	ESN ≤ 594839
M-1817661C91	12	Rotator Assembly	ESN ≥ 594840
M-681234C1	12	Rotator Shield	ESN ≤ 594839
M-1815374C1	12	Valve Stem Seal (top hat)	ESN ≥ 594840
M-675442C1	6	Injector Sleeve	
M-682840C1	12	Exhaust Manifold Stud	

### CRANKSHAFT & SEALS

PART #	QTY	DESCRIPTION	NOTE
M-675669C92	1	Crankshaft	
M-690437C93	1	Front Crankshaft Seal Kit	
M-1809964C92	1	Rear Crankshaft Seal Kit	

### CAMSHAFT & LIFTERS

PART #	QTY	DESCRIPTION	NOTE
M-1802337C1	1	Solid Lifter Camshaft	ESN 143536 to 532980
M-1810744C1	1	Roller Lifter Camshaft	ESN ≥ 532981
M-911776R3	12	Valve Lifter - Solid (.997" OD)	ESN ≤ 140086
M-1802340C1	12	Valve Lifter - Solid (1.120" OD)	ESN 140087 to 532980
M-1809570C1	12	Valve Lifter - Roller	ESN ≥ 532981

### OIL COOLER

PART #	QTY	DESCRIPTION	NOTE
M-1810171C2	1	Cooler Cartridge	ESN ≥ 517250
M-675513C1	2	Mounting Gasket	
M-252483R1	4	Seal Ring	

### OIL PUMP

PART #	QTY	DESCRIPTION	NOTE
M-1802666C92	1	Rotor Set 1.00" Thick	ESN ≤ 466775
M-1808832C92	1	Rotor Set 1.25" Thick	ESN ≥ 466776

# DT466 A/B/C TO 1993

## THERMOSTAT

PART #	QTY	DESCRIPTION	NOTE
M-1801191C91	1	Thermostat Kit 180°	Includes seal & gasket

## WATER PUMPS

PART #	QTY	DESCRIPTION	NOTE
M-685155C94	1	Water Pump	ESN ≤ 642459 S-series & Paystar
M-680899C2	1	Water Pump	ESN ≤ 642459 Cargostar
M-1815538C91	1	Water Pump	ESN ≥ 642460 screw on fan drive

## GASKET LISTING

PART #	QTY	DESCRIPTION	NOTE
M-673973C4	1	Breather Mounting Gasket	ESN ≤ 618496
M-688928C2	6	Exhaust Manifold Gasket	
M-677082	1	Front Cover Gasket	Cargostar
M-675813C2	1	Front Cover Gasket	ESN ≤ 532980 S-series & Paystar
M-1810510C3	1	Front Cover Gasket	ESN ≥ 532981
M-683791C2	1	Front End Plate Gasket	Cargostar
M-675812C2	1	Front End Plate Gasket	ESN ≤ 532980 Paystar
M-675812C2	1	Front End Plate Gasket	ESN ≤ 567491 S-series
M-1813962C1	1	Front End Plate Gasket	ESN ≥ 567492
M-674754C1	1	Injection Pump O-ring	
M-675609C1	1	Injection Pump Gasket	
M-675477C1	6	Injector Nozzle Gasket	
M-682199C2	1	Intake Manifold Gasket	
M-675513C1	2	Oil Cooler Gasket	
M-671827C4	1	Oil Pan Gasket	
M-59658D	1	Oil Pan Drain Gasket	
M-671821C2	1	Oil Pickup Tube Gasket	ESN ≤ 466775
M-1802867C1	1	Oil Pickup Tube Gasket	ESN ≥ 466776
M-675109C3	1	Rocker Cover Gasket	
M-677692C2	6	Rocker Cover Grommet	
M-670073C2	1	Turbocharger Mounting Gasket	
M-253660R2	1	Turbocharger Oil Supply Gasket	
M-670079C3	1	Turbocharger Oil Drain Gasket	

# DT408/DT466P/I530P PLN (1993-1997)

## IN-FRAME KITS

PART #	408	466	530	DESCRIPTION	NOTE
M-1826322C96	1			In-Frame Kit (1822332C95)	
M-1830063		1		In-Frame Kit (M-1822340)	ESN ≤ 888340
M-1824824C97		1		In-Frame Kit (M-1824823)	ESN ≥ 888341 175HP-230HP ST
M-1824821		1		In-Frame Kit (1824820)	ESN ≥ 888341 230HP HT & 250HP all
M-1833447C95			1	In-Frame Kit (M-1822333C95)	Below 300HP

## CYLINDER COMPONENTS

PART #	408	466	530	DESCRIPTION	NOTE
M-1822332C95	6			<b>Cylinder Kit</b>	
M-1822217C3	6			Piston	
M-1817247C91	6			Ring Set	
M-1818552	6			Piston Pin	
M-1818702	12			Pin Retainer	
M-1815674C1	6			Cylinder Liner	
M-1822322	6			Liner Packing Kit	O-rings for one liner

M-1822340		6		<b>Cylinder Kit</b>	ESN ≤ 888340
M-1822097		6		Piston	
M-1817247C91		6		Ring Set	
M-1818552		6		Piston Pin	
M-1818702		12		Pin Retainer	
M-1815674C1		6		Cylinder Liner	
M-1822322		6		Liner Packing Kit	O-rings for one liner

M-1824823		6		<b>Cylinder Kit</b>	ESN ≥ 888341 175HP -230HP ST
M-1824810		6		Piston	
M-1825461		6		Ring Set	
M-1818552		6		Piston Pin	
M-1818702		12		Pin Retainer	
M-1815674C1		6		Cylinder Liner	
M-1822322		6		Liner Packing Kit	O-rings for one liner

M-1824820		6		<b>Cylinder Kit</b>	ESN ≥ 888341 230HP HT & 250HP all
M-1823930		6		Piston	
M-1817247C91		6		Ring Set	
M-1818552		6		Piston Pin	
M-1818702		12		Pin Retainer	
M-1815674C1		6		Cylinder Liner	
M-1822322		6		Liner Packing Kit	O-rings for one liner

M-1822333C95			6	<b>Cylinder Kit - 1pc piston</b>	250HP ST & 275HP ST/HT
M-1822098C3			6	Piston	
M-1822337C91			6	Ring Set	
M-1818552			6	Piston Pin	
M-1818702			12	Pin Retainer	
M-1841326C1			6	Cylinder Liner	
M-1822322			6	Liner Packing Kit	O-rings for one liner

# DT408/DT466P/I530P PLN (1993-1997)

## ENGINE BEARINGS

PART #	408	466	530	DESCRIPTION	NOTE
M-1822389	6	6	6	Connecting Rod Bearing STD	
M-1822486	6	6	6	Connecting Rod Bearing .010"	
M-1822487	6	6	6	Connecting Rod Bearing .020"	
M-1822488	6	6	6	Connecting Rod Bearing .030"	
M-1822321	6	6	6	Main Bearing STD	
M-1822379	1	1	1	Main Bearing STD	
M-1822490	6	6	6	Main Bearing .010"	
M-1822494	1	1	1	Main Bearing .010"	
M-1822491	6	6	6	Main Bearing .020"	
M-1822495	1	1	1	Main Bearing .020"	
M-1822492	6	6	6	Main Bearing .030"	
M-1822496	1	1	1	Main Bearing .030"	
M-680117C1	1	1	1	Cam Bearing Set	
M-1818598C1	6	6	6	Connecting Rod Bushing	

## GASKET SETS

PART #	408	466	530	DESCRIPTION	NOTE
M-1822328C94	1	1	1	Upper Gasket Set	
M-1830374C95	1	1	1	Lower Gasket Set	
M-1822365C99	1	1	1	Front Cover Gasket Set	
M-1823181C92	1	1	1	Turbocharger Installation Gasket Set	
M-1823182C95	1	1	1	Oil Cooler Installation Gasket Set	
M-1826587C1	1	1	1	Oil Pan Gasket	
M-1816722	1	1	1	Oil Suction Gasket	

## CRANKSHAFT & SEALS

PART #	408	466	530	DESCRIPTION	NOTE
M-1821982C91	1			Crankshaft	
M-1821981C91		1	1	Crankshaft	
M-690437C95	1	1	1	Front Crankshaft Seal Kit	
M-1817867C2	1	1	1	Rear Crankshaft Seal Kit	

## THERMOSTAT

PART #	408	466	530	DESCRIPTION	NOTE
M-1830256C93	1	1	1	Thermostat Kit 190°	

## WATER PUMP

PART #	408	466	530	DESCRIPTION	NOTE
M-1817687	1	1	1	Water Pump	

# DT408/DT466P/I530P PLN (1993-1997)

## CYLINDER HEAD PARTS

(PLN Injection & 5/16" Valve Stem) ESN ≤ 956463)

PART #	408	466	530	DESCRIPTION	NOTE
M-1818580C1	6	6	6	Intake Valve	
M-675043C1	6	6	6	Intake Seat	
M-1824838C1	6	6	6	Exhaust Valve	
M-675450C1	6	6	6	Exhaust Seat	
M-1810944	24	24	24	Valve Lock	
M-1820264	12	12	12	Valve Guide	
M-677349C1	6	6	6	Valve Spring - Intake	
M-1825540C1	6	6	6	Valve Spring - Exhaust	
M-1820826C91	12	12	12	Rotator Retainer w/Shield	
M-1819380C1	12	12	12	Rotator Shield	
M-1822245C1	12	12	12	Valve Stem Seal	Top hat style
M-675442C1	6	6	6	Injector Sleeve	
M-1809570C1	12	12	12	Roller Tappet	

## CYLINDER HEAD PARTS

(PLN Injection & 3/8" Valve Stem) ESN ≥ 956464)

PART #	408	466	530	DESCRIPTION	NOTE
M-1824642	6	6	6	Intake Valve	
M-675043C1	6	6	6	Intake Seat	
M-1824842	6	6	6	Exhaust Valve	
M-675450C1	6	6	6	Exhaust Seat	
M-1824644	24	24	24	Valve Lock	
M-1824646C1	12	12	12	Valve Guide	
M-677349C1	6	6	6	Valve Spring - Intake	
M-1825540C1	6	6	6	Valve Spring - Exhaust	
M-1824680C1	12	12	12	Rotator Retainer w/Shield	
M-1824683C1	12	12	12	Rotator Shield	
M-1823925C1	12	12	12	Valve Stem Seal	Top hat style
M-675442C1	6	6	6	Injector Sleeve	
M-1809570C1	12	12	12	Roller Tappet	

# DT466E/1530 ELECTRONIC

(ESN 980820 TO 2000000)

## IN-FRAME KITS

PART #	466E	530E	DESCRIPTION	NOTE
M-1841391C91	1		In-Frame Kit (M-1825690)	ESN 980820 - 1194038 175HP-210HP ST
M-1833446	1		In-Frame Kit (M-1824966)	ESN ≤ 1126948 210HP HT & 230HP-250HP All
M-1830566	1		In-Frame Kit (M-1830565)	ESN 1126949 - 1194038 230HP-250HP All
M-1836195C96	1		In-Frame Kit (M-1836192C91)	ESN ≥ 1194039 175HP-215HP All
M-1836300C94	1		In-Frame Kit (M-1836299C91)	ESN ≥ 1194039 230HP-250HP All
M-1836012C94		1	In-Frame Kit (M-1825547C94) 1pc	ESN 981120 - 1194038 250HP-275HP All
M-1833445C95		1	In-Frame Kit (M-1825548C95) 2pc	ESN 981120 - 1194038 300HP & up
M-1830718C98		1	In-Frame Kit (M-1830715C93) 1pc	ESN ≥ 1194039 250HP-275HP All
M-1841902C91		1	In-Frame Kit (M-1830716C95) 2pc	ESN ≥ 1194039 300HP & up

## CYLINDER COMPONENTS

PART #	466E	530E	DESCRIPTION	NOTE
M-1825690	6		<b>Cylinder Kit</b>	ESN 980820 - 1194038 175HP-210HP ST
M-1825585	6		Piston	
M-1825461	6		Ring Set	
M-1818552	6		Piston Pin	
M-1818702	12		Pin Retainer	
M-1815674C1	6		Cylinder Liner	
M-1822322	6		Liner Packing Kit	O-rings for one liner

M-1824966	6		<b>Cylinder Kit</b>	ESN ≤ 1126948 210HP HT & 230HP-250HP All
M-1823313	6		Piston	
M-1817247C91	6		Ring Set	
M-1818552	6		Piston Pin	
M-1818702	12		Pin Retainer	
M-1815674C1	6		Cylinder Liner	
M-1822322	6		Liner Packing Kit	O-rings for one liner

M-1830565C91	6		<b>Cylinder Kit</b>	ESN 1126949 - 1194038 230HP-250HP All
M-1830375C1	6		Piston	
M-1817247C91	6		Ring Set	
M-1818552	6		Piston Pin	
M-1818702	12		Pin Retainer	
M-1815674C1	6		Cylinder Liner	
M-1822322	6		Liner Packing Kit	O-rings for one liner

M-1836192C91	6		<b>Cylinder Kit</b>	ESN ≥ 1194039 175HP-215HP All
M-1836321C1	6		Piston	
M-1830724C92	6		Ring Set	
M-1830060C1	6		Piston Pin	
M-1818702	12		Pin Retainer	
M-1841326C1	6		Cylinder Liner	4.59" bore
M-1822322	6		Liner Packing Kit	O-rings for one liner



# DT466E/1530 ELECTRONIC

(ESN 980820 TO 2000000)

## CYLINDER COMPONENTS

PART #	466E	530E	DESCRIPTION	NOTE
M-1836299C91	6		<b>Cylinder Kit</b>	ESN ≥ 1194039 230HP-250HP All
M-1833092C2	6		Piston	
M-1830723C92	6		Ring Set	
M-1830060C1	6		Piston Pin	
M-1818702	12		Pin Retainer	
M-1841326C1	6		Cylinder Liner	4.59" bore
M-1822322	6		Liner Packing Kit	O-rings for one liner

M-1825547C94		6	<b>Cylinder Kit - 1pc piston</b>	ESN 981120 - 1194038 250HP-275HP All
M-1825593C1		6	Piston	
M-1822337C91		6	Ring Set	
M-1818552		6	Piston Pin	
M-1818702		12	Pin Retainer	
M-1841326C1		6	Cylinder Liner	
M-1822322		6	Liner Packing Kit	O-rings for one liner

M-1825548C95		6	<b>Cylinder Kit - X-hd piston</b>	ESN 981120 - 1194038 300HP & up
M-1826412C1		6	Piston	
M-1826414C1		6	Skirt	
M-1822337C91		6	Ring Set	
M-1818552		6	Piston Pin	
M-1818702		12	Pin Retainer	
M-1841326C1		6	Cylinder Liner	
M-1822322		6	Liner Packing Kit	O-rings for one liner

M-1830715C93		6	<b>Cylinder Kit - 1pc piston</b>	ESN ≥ 1194039 250HP-275HP All
M-1830532C2		6	Piston	
M-1830723C92		6	Ring Set	
M-1830060C1		6	Piston Pin	
M-1818702		12	Pin Retainer	
M-1841326C1		6	Cylinder Liner	
M-1822322		6	Liner Packing Kit	O-rings for one liner

M-1830716C95		6	<b>Cylinder Kit - X-hd piston</b>	ESN ≥ 1194039 300HP & up
M-1836320C1		6	Piston	
M-1833433C1		6	Skirt	
M-1830724C92		6	Ring Set	
M-1830060C1		6	Piston Pin	
M-1818702		12	Pin Retainer	
M-1841326C1		6	Cylinder Liner	
M-1822322		6	Liner Packing Kit	O-rings for one liner

# DT466E/1530 ELECTRONIC

(ESN 980820 TO 2000000)

## ENGINE BEARINGS

ESN ≤ 1194038

PART #	466E	530E	DESCRIPTION	NOTE
M-1822389	6	6	Connecting Rod Bearing STD	ESN ≤ 1194038
M-1822486	6	6	Connecting Rod Bearing .010"	
M-1822487	6	6	Connecting Rod Bearing .020"	
M-1822488	6	6	Connecting Rod Bearing .030"	
M-1822321	6	6	Main Bearing STD	ESN ≤ 1194038
M-1822379	1	1	Main Bearing STD	
M-1822490	6	6	Main Bearing .010"	
M-1822494	1	1	Main Bearing .010"	
M-1822491	6	6	Main Bearing .020"	
M-1822495	1	1	Main Bearing .020"	
M-1822492	6	6	Main Bearing .030"	
M-1822496	1	1	Main Bearing .030"	

## ENGINE BEARINGS

ESN ≥ 1194039

PART #	466E	530E	DESCRIPTION	NOTE
M-1842570C92	6	6	Connecting Rod Bearing STD	ESN ≥ 1194039
M-1830725C91	6	6	Main Bearing STD	ESN ≥ 1194039
M-1830726C91	1	1	Main Bearing STD	
M-680117C1	1	1	Cam Bearing Set	
M-1818598C1	6	6	Connecting Rod Bushing	

## GASKET SETS

PART #	466E	530E	DESCRIPTION	NOTE
M-1824970C99	1	1	Upper Gasket Set	ESN ≤ 1194038
M-1830720C94	1	1	Upper Gasket Set	ESN ≥ 1194039
M-1830721C94		1	Upper Gasket Set	ESN ≥ 1194039
M-1874865C91	1	1	Lower Gasket Set	
M-1824984C94	1	1	Front Cover Gasket Set	
MCBS0008	6	6	Injector Seal Ring Kit	(M-1833564C92)
MCBS0007	6	6	Injector Internal Seal Ring Kit	
M-1823181C92	1	1	Turbocharger Install Gasket Set	
M-1823182C95	1	1	Oil Cooler Installation Gasket Set	
M-1826587C1	1	1	Oil Pan Gasket	
M-1816722	1	1	Oil Suction Gasket	

## CRANKSHAFT & SEALS

PART #	466E	530E	DESCRIPTION	NOTE
M-1830596C91	1		Crankshaft	ESN ≤ 1194038
M-1830597C91	1		Crankshaft	ESN ≥ 1194039
M-1830596C91		1	Crankshaft	
M-690437C95	1	1	Front Crankshaft Seal Kit	
M-1817867C92	1	1	Rear Crankshaft Seal Kit	

All manufacturer's names, numbers, symbols and descriptions are used for reference only and do not imply that any part listed is the product of these manufacturers.

# DT466E/1530 ELECTRONIC

(ESN 980820 TO 2000000)

## THERMOSTAT

PART #	466E	530E	DESCRIPTION	NOTE
M-1830256C93	1	1	Thermostat Kit 190°	

## WATER PUMP

PART #	466E	530E	DESCRIPTION	NOTE
M-1817687	1	1	Water Pump	

## CYLINDER HEAD PARTS

ESN ≤ 1194038

PART #	466E	530E	DESCRIPTION	NOTE
M-1823875C2	6	6	Intake Valve	
M-1821900C1	6	6	Intake Seat - STD	
M-1821901C1	6	6	Intake Seat - .002" OS	
M-1821902C1	6	6	Intake Seat - .015" OS	
M-1842912C1	6	6	Exhaust Valve	
M-1821903C3	6	6	Exhaust Seat - STD	
M-1821904C3	6	6	Exhaust Seat - .002" OS	
M-1821905C3	6	6	Exhaust Seat - .015" OS	
M-1824644C1	24	24	Valve Lock	
M-1824647C1	12	12	Valve Guide	
M-677349C1	6	6	Valve Spring - Intake	
M-1825540C1	6	6	Valve Spring - Exhaust	
M-1824680C1	12	12	Rotator Retainer w/Shield	
M-1824683C1	12	12	Rotator Shield	
M-1823925C1	12	12	Valve Stem Seal	Top hat style
M-1818778C2	6	6	Injector Sleeve	
M-1809570C2	12	12	Roller Tappet	

## CYLINDER HEAD PARTS

ESN 1194039 to 2000000

PART #	466E	530E	DESCRIPTION	NOTE
M-1842913C1	6	6	Intake Valve	
M-1827121C2	6	6	Intake Seat - STD	
M-1830310C2	6	6	Intake Seat - .002" OS	
M-1830311C2	6	6	Intake Seat - .015" OS	
M-1842912C1	6	6	Exhaust Valve	
M-1830711C1	6	6	Exhaust Seat - STD	
M-1830712C1	6	6	Exhaust Seat - .002" OS	
M-1830713C1	6	6	Exhaust Seat - .015" OS	
M-1824644C1	24	24	Valve Lock	
M-1824647C1	12	12	Valve Guide	
M-677349C1	6	6	Valve Spring - Intake	
M-1825540C1	6	6	Valve Spring - Exhaust	
M-1824680C1	12	12	Rotator Retainer w/Shield	
M-1824683C1	12	12	Rotator Shield	
M-1823925C1	12	12	Valve Stem Seal	Top hat style
M-1833382C1	6	6	Injector Sleeve	
M-1809570C2	12	12	Roller Tappet	

# DT466E/DT570/HT570

(ESN 2000000 to 3000000)

## IN-FRAME KITS

PART #	466E	570E	DESCRIPTION	NOTE
M-1879703C94	1		In-Frame Kit (M-1842554C93)	
M-1879705C93	1		In-Frame Kit (M-1842556C94)	
M-1880991C94	1		In-Frame Kit (M-1876100C92)	
M-1885597C92	1		In-Frame Kit (M-1850403C92)	

## CYLINDER COMPONENTS

PART #	466E	570E	DESCRIPTION	NOTE
M-1842554C93	6		<b>Cylinder Kit</b>	
M-1842227C1	6		Piston	
M-1830724C92	6		Ring Set	
M-1874253C1	6		Piston Pin	M-1830060C1
M-1818702C1	12		Pin Retainer	
M-1841326C1	6		Cylinder Liner	
M-1842115C1	6		Liner Seal Ring	

M-1842556C94	6		<b>Cylinder Kit</b>	
M-1842622C2	6		Piston	
M-1842551C92	6		Ring Set	
M-1874253C1	6		Piston Pin	M-1830060C1
M-1818702C1	12		Pin Retainer	
M-1841326C1	6		Cylinder Liner	
M-1842115C1	6		Liner Seal Ring	

M-1876100C92	6		<b>Cylinder Kit</b>	
M-1847682C2	6		Piston	
M-1876098C91	6		Ring Set	
M-1874253C1	6		Piston Pin	M-1830060C1
M-1818702C1	12		Pin Retainer	
M-1841326C1	6		Cylinder Liner	
M-1842115C1	6		Liner Seal Ring	

M-1850403C92	6		<b>Cylinder Kit</b>	
M-1858121C1	6		Piston	
M-1850402C91	6		Ring Set	
M-1874253C1	6		Piston Pin	M-1830060C1
M-1818702C1	12		Pin Retainer	
M-1841326C1	6		Cylinder Liner	
M-1842115C1	6		Liner Seal Ring	

# DT466E/DT570/HT570

(ESN 2000000 to 3000000)

## ENGINE BEARINGS

PART #	466E	570E	DESCRIPTION	NOTE
M-1842570C92	6	6	Connecting Rod Bearing STD	
M-1842900C92	6	6	Connecting Rod Bearing .010"	
M-1842901C92	6	6	Connecting Rod Bearing .020"	
M-1842902C92	6	6	Connecting Rod Bearing .030"	

M-1842566C92	6	6	Main Bearing STD	
M-1842567C92	1	1	Main Bearing STD	
M-1842889C91	6	6	Main Bearing .010"	
M-1842892C91	1	1	Main Bearing .010"	
M-1842890C91	6	6	Main Bearing .020"	
M-1842893C91	1	1	Main Bearing .020"	
M-1842891C91	6	6	Main Bearing .030"	
M-1842894C91	1	1	Main Bearing .030"	

M-675424C1	1	1	Cam Bearing Front	
M-1842054C1	2	2	Cam Bearing Intermediate	
M-1842053C1	1	1	Cam Bearing Rear	

M-1872733C2	6	6	Connecting Rod Bushing	
-------------	---	---	------------------------	--

## GASKET SETS

PART #	466E	570E	DESCRIPTION	NOTE
M-1885598C91	1	1	Upper Gasket Set	

M-1842663C93	1	1	Gasket Set - Front Cover/Front Half	
M-1842662C91	1	1	Gasket Set - Front Cover/Rear Half	

M-1842626C95	1	1	Gasket Set - High Pressure Oil Rail	
--------------	---	---	-------------------------------------	--

M-1842623C93	1	1	Gasket Set - Turbocharger Mounting	
--------------	---	---	------------------------------------	--

M-1842588C93	1	1	Gasket Set - EGR Cooler	
M-1842592C91	1	1	Gasket Set - EGR Mixer	

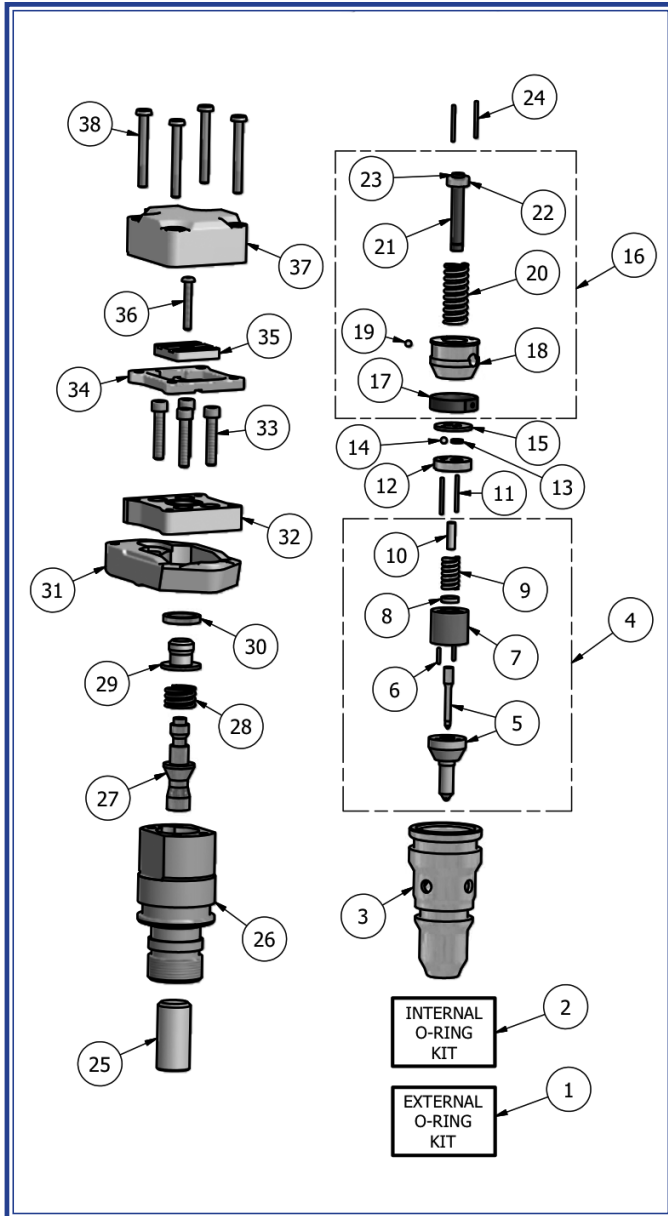
M-1842624C92	6	6	Seal Kit - Injector Installation	
--------------	---	---	----------------------------------	--

## CRANKSHAFT & SEALS

PART #	466E	570E	DESCRIPTION	NOTE
M-1833095C93	1		Front Seal Kit	
M-1833096C94		1	Front Seal Kit	

M-1841938C1	1	1	Rear Seal Kit	
-------------	---	---	---------------	--

# HEUI® INJECTORS



ITEM	PART NUMBER	DESCRIPTION	QTY REQ'D.
1	MCBS0008	External O-ring kit	1
2	See Application Chart on Next Page	Internal O-ring kit	1
3	8991079	Nut	1
4	See Application Chart on Next Page	Nozzle Group	1
5	See Application Chart on Next Page	Nozzle Assembly	1
6	8991002	Dowel	2
7	8991029	Spacer Sleeve	1
8	8991028	Lift Spacer	1
9	8991027	Nozzle Spring	1
9	8991106	Nozzle Spring	1
10	8991026	Stop Pin	1
11	8991001	Dowel	2
12	8991080	Stop Pin	1
13	8991081	Check Plate	1
14	8991082	Check Ball	1
15	8991083	Stop Plate	1
16	See Application Chart on Next Page	Plunger and Barrel Group	1
17	REF	Retaining Spring	1
18	REF	Barrel	1
19	REF	Check Ball	1
20	REF	Spring	1
21	REF	Plunger	1
22	REF	Retaining Washer	1
23	REF	Retaining Ring	1
24	8991001	Dowel	2
25	See Application Chart on Next Page	Intensifier Piston	1
26	8991091	Piston & Valve Body	1
27	8991092	Poppet Valve	1
28	8991093	Poppet Spring	1
29	8991094	Sleeve	1
30	8991095	Poppet Shim	1
31	8991096	Clamp	1
32	8991097	Adapter	1
33	8991099	Assembly Screw	4
34	8991100	Solenoid Spacer	1
35	8991101	Armature	1
36	8991102	Adjusting Screw	1
37	8991103	Solenoid Spacer	1
38	8991003	Solenoid Screw	4

# HEUI® INJECTORS

## APPLICATION CHART

ITEM	PART NUMBER	DESCRIPTION	QTY REQ'D.
#2	MCBS0007	Internal O-Ring Kits	1
	MCBS0530	Internal O-Ring Kits	1
#4	8991135	Nozzle Group	1
	8991136	Nozzle Group	1
	8991137	Nozzle Group	1
	8991145	Nozzle Group	1
	8991146	Nozzle Group	1
	8991155	Nozzle Group	1
	8991156	Nozzle Group	1
	8991165	Nozzle Group	1
	8991166	Nozzle Group	1
	8991175	Nozzle Group	1
	#5	8991035	Nozzle Assembly
8991036		Nozzle Assembly	1
8991037		Nozzle Assembly	1
8991045		Nozzle Assembly	1
8991046		Nozzle Assembly	1
8991055		Nozzle Assembly	1
8991056		Nozzle Assembly	1
8991065		Nozzle Assembly	1
8991066		Nozzle Assembly	1
8991075		Nozzle Assembly	1

ITEM	PART NUMBER	DESCRIPTION	QTY REQ'D.	
#16	8996000	Plunger and Barrel Group	1	
	8996001	Plunger and Barrel Group	1	
	8996060	Plunger and Barrel Group	1	
	8996061	Plunger and Barrel Group	1	
	8997100	Plunger and Barrel Group	1	
	8997160	Plunger and Barrel Group	1	
	#25	8991110	Intensifier Piston	1
		8991111	Intensifier Piston	1
8991112		Intensifier Piston	1	
8991113		Intensifier Piston	1	
8991114		Intensifier Piston	1	
8991115		Intensifier Piston	1	
8991117		Intensifier Piston	1	
8991118	Intensifier Piston	1		

BODY GROUP	MODEL YEAR	ENGINE	NAVISTAR INJECTOR P/N	P&B GROUP TYPE PLUNGER OD	NOZZLE P/N ORIFICES VOP (PSI)	NOZZLE GROUP	SEAL KITS: INTERNAL EXTERNAL	INTENSIFIER PISTON OD LENGTH
AA	94-96 94-98	Navistar T444E Up to Engine S/N 460194	1822800C95 (3) 1816187C3 (4) 1822801C98 (1) 1822801C99 (1) 1821836C3 (2)	8996000 Standard 6.0mm	8991037 7 holes 2675 +/-125	8991137	MCBS0007 MCBS0008	8991117 16mm 32.2mm
AB	97-99 99	Navistar T444E Engine S/N 460195 to 843989	1824582C94 1822803C1 1824583C97 1825125C1	8996060 Prime 6.0 mm	8991037 7 holes 2675 +/-125	8991137	MCBS0007 MCBS0008	8991114 16mm 29.7mm
AC	94-96	Navistar T444E (High Output), 210HP (High Torque) & 230HP	1824455C94 1822890C1 1824456C96 1824472C1	8996001 Standard 6.0mm	8991037 7 holes 2675 +/-125	8991137	MCBS0007 MCBS0008	8991115 16mm 29.7mm
AD	99-02 99-03	Navistar T444E Engine S/N 843990 & Up	1831551C1 1831550C1 1831487C92 1831487C93 1831489C1	8996061 Prime 6.0mm	8991037 7 holes 2675 +/-125	8991137	MCBS0007 MCBS0008	8991111 16mm 29.1mm
AE	99-02 02-03	Navistar T444E Engine S/N 1313828 & Up	1833639C1 1833640C1 1833646C92	8996061 Prime 6.0mm	8991037 7 holes 2675 +/-125	8991137	MCBS0007 MCBS0008	8991110 16mm 29.1mm

All manufacturer's names, numbers, symbols and descriptions are used for reference only and do not imply that any part listed is the product of these manufacturers.



## APPLICATION CHART

BODY GROUP	MODEL YEAR	ENGINE	NAVISTAR INJECTOR P/N	P&B GROUP TYPE PLUNGER OD	NOZZLE P/N ORIFICES VOP (PSI)	NOZZLE GROUP	SEAL KITS: INTERNAL EXTERNAL	INTENSIFIER PISTON OD LENGTH
BA	95-97	Navistar DT466E, 230HP (High Torque) & 250HP up to S/N 1084867	1823736C94 1819834C1 1824928C94 1824917C2	8996001 Standard 6.0mm	8991055 5 holes 3700 +/-125	8991155	MCBS0007 MCBS0008	8991115 16mm 29.7mm
BB	95-97	Navistar DT466E, 175 & 190HP up to S/N 1028710	1824742C91 1824739C1 1824929C94 1824918C2	8996001 Standard 6.0mm	8991045 5 holes 3700 +/-125	8991145	MCBS0007 MCBS0008	8991115 16mm 29.7mm
BC	95-97	Navistar DT466E, 195, 210 & 230HP up to S/N 1028710	1824743C91 1824740C1 1824930C94 1824919C2	8996001 Standard 6.0mm	8991035 5 holes 3700 +/-125	8991135	MCBS0007 MCBS0008	8991115 16mm 29.7mm
BD	95-97	Navistar I530E, 250, 275 & 300HP up to S/N 1084028	1824744C94 1824741C2 1824931C94 1824920C2	8997100 Standard 7.1mm	8991065 5 holes 3700 +/-125	8991165	MCBS0530 MCBS0008	8991113 17.5mm 29.3mm
BE	97-99	Navistar DT466E, 175 to 210 & 230HP Engine S/N 1028711 to 1194038	1829838C94 1829926C2 1829839C93 1829839C94 1829837C2	8996060 Prime 6.0mm	8991035 5 holes 3700 +/-125	8991135	MCBS0007 MCBS0008	8991112 16mm 29.1mm
BF	98-99	Navistar I530E, 250 to 320HP Engine S/N 1084029 to 1134350	1830145C92 1830147C2 1830146C92 1830146C93 1830148C2	8997160 Prime 7.1mm	8991075 5 holes 3700 +/-125	8991175	MCBS0530 MCBS0008	8991118 17.5mm 26.7mm
BG	97-99	Navistar DT466E, 250HP S/N 1084868 to 1125227	1830155C91 1830157C1 1830156C91 1830573C2	8997160 Prime 7.1mm	8991036 6 holes 3700 +/-125	8991136	MCBS0530 MCBS0008	8991118 17.5mm 26.7mm
BI	99-UP	Navistar DT466E, 250HP S/N 1125228 & Up	1830740C92 1830560C2 1830561C92 1830741C92 1830741C93 1830562C2	8997160 Prime 7.1mm	8991046 6 holes 3700 +/-125	8991146	MCBS0530 MCBS0008	8991118 17.5mm 26.7mm
BJ	99	Navistar I530E, 250 to 320HP, Engine S/N 1134351 to 1194038	1830570C92 1830571C2 1830572C92 1830572C93 1830573C2	8997160 Prime 7.1mm	8991036 6 holes 3700 +/-125	8991136	MCBS0530 MCBS0008	8991118 17.5mm 26.7mm
BN	00-UP	Navistar I530E Engine 1194039 & Up	1830693C1 1830694C91 1830692C91 1830691C1	8997160 Prime 7.1mm	8991056 6 holes 3700 +/-125	8991156	MCBS0530 MCBS0008	8991118 17.5mm 26.7mm
BP	00-UP	Navistar DT466E Transit	1836252C91 1836253C1 1836251C91 1836250C1	8997160 Prime 7.1mm	8991066 6 holes 3700 +/-125	8991166	MCBS0530 MCBS0008	8991118 17.5mm 26.7mm



**INTERSTATE-McBEE**



## **GENERAL PRODUCTS WARRANTY**

### **EXPORT & REMANUFACTURED ENGINE PARTS ALL FUEL INJECTION, NEW & REMANUFACTURED**

#### **COVERAGE**

The parts furnished by Interstate-McBee are warranted to be free from defects in material and workmanship under normal use and service for a period of twelve (12) months, 100,000 miles or 2,000 hours of operation, whichever comes first, from date of first installation in an engine. This warranty applies to all owners in the chain of distribution, i.e. distributor, dealer, original owner, until the end of the respective periods of coverage and shall not apply to subsequent owners.

This warranty does not apply to parts provided by Interstate Interstate-McBee on a no-charge basis. In no event shall this warranty extend beyond eighteen (18) months from date of sale or manufacture.

#### **INTERSTATE-McBEE RESPONSIBILITIES**

The obligation of Interstate-McBee under this warranty, statutory or otherwise, is limited to the replacement or repair of Interstate – McBee parts, which our inspection discloses to our satisfaction to have been defective. Repair will be performed at our factory in Cleveland, OH or other Interstate-McBee approved facility. Proof of purchase is required.

#### **OWNER'S RESPONSIBILITIES**

Owner is responsible for the operation and maintenance of the engine as specified in the APPLICABLE O.E.M. OPERATION AND MAINTENANCE MANUALS. Owner must give notice within (30) days of any suspected failure and before expiration of applicable warranty to be considered warrantable. Owner will provide alleged defective and associated parts for examination by Interstate-McBee and, if requested, return same F.O.B. Cleveland, Ohio. Interstate-McBee further reserves the right to examine any engine subject to a claim under this warranty. Owner is responsible for all costs, including, but not limited to, repairs made to items other than the engine in which the parts are installed, "downtime" expenses and all business costs and losses resulting from a warrantable failure. **OWNER MUST GET AUTHORIZATION FROM INTERSTATE-McBEE'S WARRANTY ADMINISTRATOR (ALONG WITH A RETURN MATERIAL AUTHORIZATION FORM) PRIOR TO FILING A WARRANTY CLAIM WITHIN SAID WARRANTY PERIOD**

#### **WARRANTY LIMITATIONS**

Interstate-McBee is not responsible for failure resulting from owner or operator abuse or neglect, such as, but not limited to: operation without adequate coolant, fuel or lubricants; overfueling\*; overspeeding; lack of maintenance of lubricating, coolant or air intake systems; improper storage, starting, warm-up, run-in or shut down practices. Interstate-McBee is not responsible for failures resulting from improper repair or installation, for parts that have been altered or for parts not approved by Interstate-McBee. This warranty does not apply to parts furnished on a no charge basis. Interstate-McBee does not warrant parts supplied by Interstate-McBee which bear the name and or trademark of another company. These parts are warranted by their manufacturers and not by Interstate-McBee. In no event shall this warranty extend beyond eighteen (18) months from the date of sale. **THERE ARE NO WARRANTIES EXPRESSED, IMPLIED OR STATUTORY, FOR THE PARTS NAMED HEREIN BEFORE, MADE BY INTERSTATE-McBEE OTHER THAN SET FORTH HEREIN.** We neither assume nor authorize any other persons to assume for us any other liability in connection with our products. **INTERSTATE-McBEE SHALL NOT BE RESPONSIBLE FOR ANY OTHER CONSEQUENTIAL DAMAGES OR CONTINGENT LIABILITIES.** Further, in no event shall Intestate-McBee bear any responsibility for any damages, which exceed the then available aggregate coverage provided under the terms and conditions of its product liability policy.

\*covered on fuel injection products

This warranty shall be interpreted, governed and enforced in accordance with the laws of the State of Ohio, U.S.A. (For products not covered herein, see Interstate-McBee's Extended Warranty). Any actions or proceedings relating to this warranty must be filed or commenced within three (3) months of the alleged breach. If any of these warranty provisions or portions thereof is prohibited by law or by any court of competent jurisdiction, in any locality, its invalidity or unenforceability shall not affect the validity or the enforceability of any other warranty provisions or portions thereof.

This warranty applies to parts sold by Interstate on or after August, 2007.

**INTERSTATE-McBEE, LLC 5300 LAKESIDE AVENUE, CLEVELAND, OHIO 44114-3996**

# **EXTENDED WARRANTY**

## **ENGINE PARTS – U.S.A. & CANADA**

### **COVERAGE**

#### **Diesel Engine**

New engine parts furnished by Interstate-McBee are warranted to be free from defects in material and workmanship under normal use and service for a period of twenty-four (24) months from the date of installation, without mileage or hour limitation. This warranty applies to all owners in the chain of distribution, i.e. distributor, dealer, original owner, until the end of the respective periods of coverage and shall not apply to subsequent owners.

#### **Natural Gas or Methane Engine and Prime Power Generation**

New engine parts furnished by Interstate-McBee are warranted to be free from defects in material and workmanship under normal use and service, for a period of twelve (12) months from the date of installation. This warranty applies to all owners in the chain of distribution, i.e. distributor, dealer, original owner, until the end of the respective periods of coverage and shall not apply to subsequent owners.

#### **Castings**

Cylinder head and cylinder block castings are warranted for 12 months from date of installation; part replacement only, no progressive damage, no labor.

Fuel Injection parts and countries not included here-in are covered under a separate warranty titled "Interstate-McBee, LLC LIMITED General Products warranty." This warranty does not apply to parts provided by Interstate-McBee on a no-charge basis. In no event shall this warranty extend beyond thirty (30) months from date of sale or manufacture.

### **INTERSTATE-MCBEE RESPONSIBILITIES**

Interstate-McBee will pay only for parts and labor needed to repair damages directly resulting from an above defined warranty failure to the functional condition existing immediately prior to the failure, including progressive damage to the engine in which the warrantable part was installed, provided Interstate-McBee's inspection of said failed part or parts discloses to our satisfaction to have been defective. Labor cost will be paid in accordance with published labor rates, but not to exceed reasonable flat rates times nor Interstate McBee's standard hourly rate. No overtime or holiday rates will be allowed. Only new or rebuilt Interstate-McBee or Interstate-McBee approved parts will be used in making the repair.

### **OWNER'S RESPONSIBILITIES**

Owner is responsible for the operation and maintenance of the engine as specified in the APPLICABLE O.E.M. OPERATION AND MAINTENANCE MANUALS. Owner must give notice within (30) days of any suspected failure and before expiration of applicable warranty to be considered warrantable. Owner will provide alleged defective and associated parts for examination by Interstate-McBee and, if requested, return same F.O.B. Cleveland, Ohio. Interstate-McBee further reserves the right to examine any engine subject to a claim under this warranty. Approved warranty work is to be performed by an authorized Interstate-McBee Distributor or Dealer or other Interstate-McBee approved facility. Owner is responsible for all costs, including, but not limited to, repairs made to items other than the engine in which the parts are installed, "downtime" expenses and all business costs and losses resulting from a warrantable failure. OWNER MUST GET AUTHORIZATION FROM INTERSTATE-MCBEE'S WARRANTY ADMINISTRATOR (ALONG WITH A RETURN MATERIAL AUTHORIZATION FORM) PRIOR TO FILING A WARRANTY CLAIM WITHIN SAID WARRANTY PERIOD

### **WARRANTY LIMITATIONS**

Interstate-McBee is not responsible for failure resulting from owner or operator abuse or neglect, such as, but not limited to: operation without adequate coolant, fuel or lubricants; overfueling; overspeeding; lack of maintenance of lubricating, coolant or air intake systems; improper storage, starting, warm-up, run-in or shut down practices. Interstate-McBee is not responsible for failures resulting from improper repair or installation, for parts that have been altered or for parts not approved by Interstate-McBee. This warranty does not apply to parts furnished on a no charge basis. Interstate-McBee does not warrant parts supplied by Interstate-McBee which bear the name and or trademark of another company. These parts are warranted by their manufacturers and not by Interstate-McBee. In no event shall this warranty extend beyond (30) months from the date of sale. THERE ARE NO WARRANTIES EXPRESSED, IMPLIED OR STATUTORY, FOR THE PARTS NAMED HEREIN BEFORE, MADE BY INTERSTATE-MCBEE OTHER THAN SET FORTH HEREIN. We neither assume nor authorize any other persons to assume for us any other liability in connection with our products. INTERSTATE-MCBEE SHALL NOT BE RESPONSIBLE FOR ANY OTHER CONSEQUENTIAL DAMAGES OR CONTINGENT LIABILITIES. Further, in no event shall Interstate-McBee bear any responsibility for any damages, which exceed the then available aggregate coverage provided under the terms and conditions of its product liability policy. Fuel Injection parts and countries not included here-in are covered under a separate warranty titled "Interstate-McBee, LLC LIMITED General Products warranty."

This warranty for the U.S.A. & Canada shall be interpreted, governed and enforced in accordance with the laws of the State of Ohio, U.S.A. (For products not covered herein, see Interstate-McBee's General Product Warranty.) Any actions or proceedings relating to this warranty must be filed or commenced within three (3) months of the alleged breach. If any of these warranty provisions or portions thereof prohibited by law or by any court of competent jurisdiction, in any locality, its invalidity or unenforceability shall not affect the validity or enforceability of any other warranty provisions or portions thereof. This warranty applies to parts sold by Interstate-McBee on or after August 2007.

INTERSTATE-MCBEE L.L.C, 5300 LAKESIDE AVENUE, CLEVELAND, OHIO 44114-3996





# U.S.A. Presidential Award



## For Excellence in Export



**INTERSTATE-McBEE**



### **Corporate Headquarters**

**Cleveland, Ohio**

5300 Lakeside Avenue

Cleveland, Ohio 44114

Phone: 216-881-0015

Toll Free: 800-321-4234

Fax: 216-881-0805

Website: [www.interstate-mcbee.com](http://www.interstate-mcbee.com)

Email: [sales@interstate-mcbee.com](mailto:sales@interstate-mcbee.com)

### **Miami, Florida**

9955 NW 58th Street

Doral, Florida 33178

Phone: 305-863-6650

Toll Free: 800-660-6228

Fax: 305-863-6272

### **Montebello, California**

1608 Beach Street

Montebello, California 90640

Phone: 323-888-0746

Toll Free: 800-522-6163

Fax: 323-727-9314

### **Kolding, Denmark**

Ole Romers Bej 2

Kolding, Denmark 6000

Phone: 45 7631 0531

Fax: 45 7631 0731

Email: [dpe@dieselpartner.com](mailto:dpe@dieselpartner.com)

### **Valencia, Spain**

C/Rosa Luxemburgo 24

Pol. Ind. La Figuera

Alaquas, Valencia 46970

Phone: 34 96 156 00 00

Fax: 34 96 111 31 00

Email: [joaquin@gradoli.net](mailto:joaquin@gradoli.net)